



SHOCK-RESISTANT



BREAK-PROOF



WASHABLE

SEP 001

PASSIVE ELECTRIC LIFTER



ENCLARA
MEDICAL

The SEP 001 lifter is built to allow a carer to transfer an impaired or elderly person in safety within a home or professional environment.

It is designed with patient and operator ergonomics in mind, during all lifting and transfer operations.

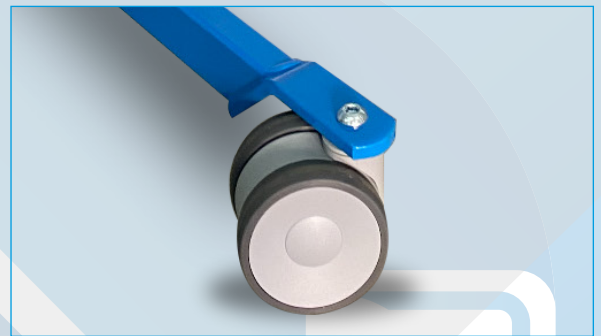


STRONG

Its structure, extremely stable and robust, and its powerful electric motors allow the carer to lift patients weighing up to 205 kg

MANEUVERABLE

Optimal maneuverability is facilitated by the comfortable handles and the 100 mm diameter twin wheel swivel castors.



VERSATILE

Thanks to the wide range of the arm, the SEP 001 can lift patients from the floor, as well as lift tall patients or use long slings.

SMART

Leg and lift arm movements can be operated from the remote control or from the control panel.

The smart control unit displays the state of charge of the battery, has an overload alarm and allows monitoring of the maintenance intervals.

When not in use, the remote control can be magnetically attached to the structure.



LITHIUM BATTERY

The high capacity lithium battery weighs 7 times less and guarantees a number of charge cycles up to 5 times more than a traditional battery.